

This association is expressed particularly well on the incised *Peccary Skull 1* from *Tomb 1 of Copan* (Fig. 18): Within a cartouche two lords are seated in front of a stela and a death head's altar. The death head is spiral-eyed, and therefore confined to the realm of the "shadows (*muh*)". The stela is distinguished by incised T 528 (*haab*)-elements and by two "twisted bands" T 664, interpreted by me as *hal*, which means "to weave, braid" in the Cholan, but "to change, renew" in the Quichéan languages (DÜTTING 1972: 233). Their combination 664-528, *hal.haab*, could refer to the major concern

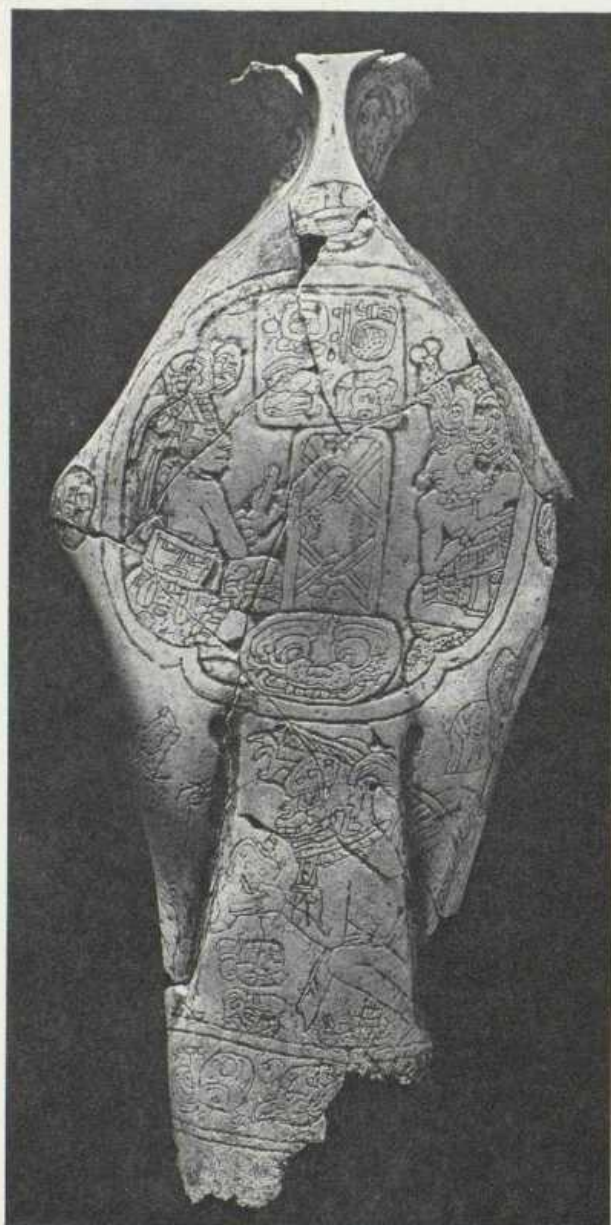


Fig. 18 Incised Peccary Skull 1 from Tomb 1, Copan (photograph by H. BURGER, courtesy of Peabody Museum, Harvard University).