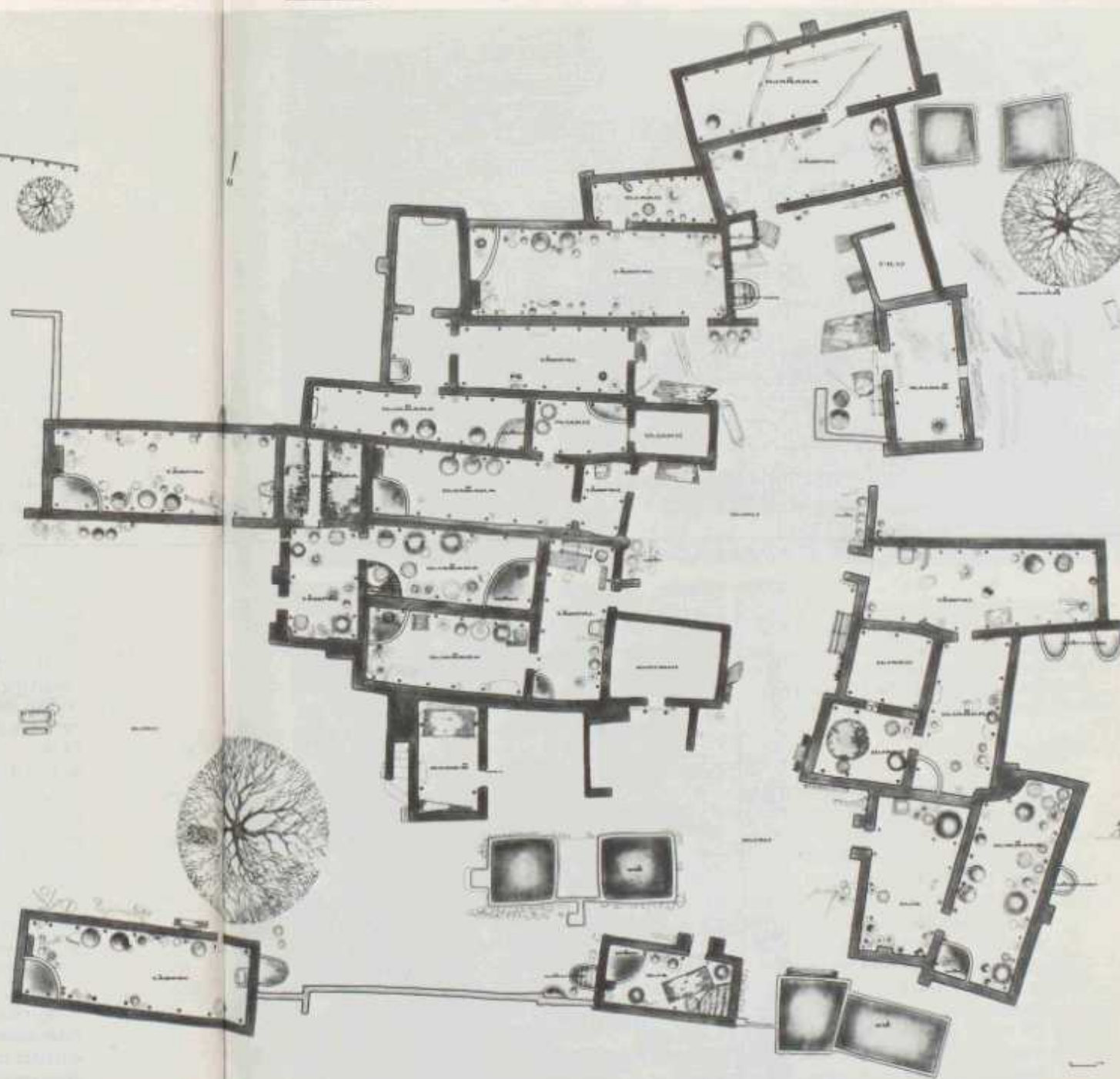




D. 1.  
Koena. Okano's compound plan.  
*Djanibi*: married man's space. *Djaubi*:  
man's open space covered with millet stalks.  
*Kuigui*: pen for chickens. *Kuikagu*:  
laying-place for hens. *Badien*: single man's  
space. *Filu*: bathing place. *Dja* or *tânpal*:  
woman's space containing the grindstone

(*namu*) now commonly housing the cooking  
area against the furthestmost shorter wall  
from the entrance. *Djako*: storage space that  
can be locked up. *Djau*: open court.  
*Duguân*: area under a tree situated close to  
the compound entrance. *Viè*: high adobe  
granary. *F*: shrine. *Kuikul*: semicircular



enclosure for storing shea nuts.  
*Kuikuitabo*: outdoor two story shea nut  
drying device that makes use of the smoke  
coming from a small fire underneath. *Dâna*:  
exterior area for guinea-corn beer  
preparation. The same map shows kinship