

Fig. 11 Pillar (*ustū*). Ashkun area. Cedar wood; h. 219 cm., w. 29 cm., d. 13 cm. Purchased in Kabul on July 10, 1975. From the Ashkun area west of the Pech Valley. Attribution on stylistic grounds.

Rather flat pillar with decoration in two sections; the upper section centers on two deeply undercut shapes reminiscent of human heads, each filled with a snake head; underneath is a design of crossed V's, and above are the familiar tuft-like horns, but in a set of three only; lower section somewhat different, centering on two heads with facial details, but the right one with a triangle as part of the nose; underneath is an intertwined motif similar to crossed V's, and above is a grill formed by two intertwined bands (snakes?), topped by two horn-like tufts; sides decorated with snakes, the lower right one having two heads.

Fig. 12 Pillar (non-Nuristan). Probably from the Pasha'i area. Cedar wood; h. 238 cm., w. 15–17 cm., d. 17 cm. Purchased in Kabul on May 10, 1976.

Slender post with deeply undercut decoration on front and high relief decoration on the two sides; front side carved into four superimposed triangular heads with long horns, each horn ornamented with two grooved bands; sides covered with series of alternating horn and rhomboid motifs (stylized heads?) divided by horizontal bands with zigzag ornament; top end has round peg.

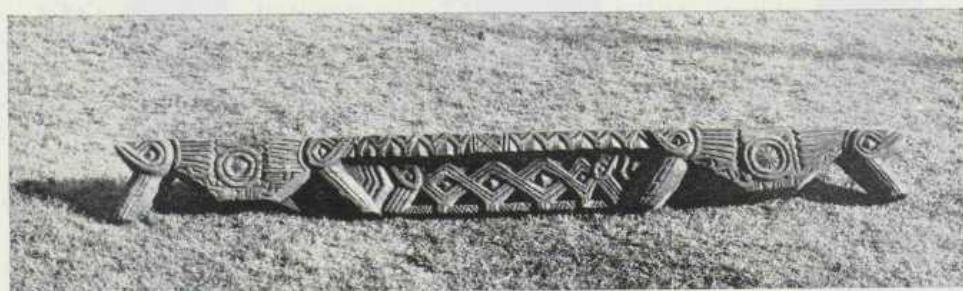


Fig. 13 Cross Beam (*paček*). Nisheigrom, Waigal Valley. Cedar wood; l. 280 cm., h. 28 cm., d. 21 cm. Purchased in Kabul on April 20, 1978.

Allegedly from the "house of Demuta" (see fig. 8); used as transom above pair of pillars.

Heavy beam carved on front and back into capitals at each end connected by a decorated piece; each capital consists of two animal heads (probably horse heads) with angled struts, set back to back against a rectangular central block decorated with a spoked wheel on front and intertwined horns on back; necks of animals carved with foliage-like pattern and snakes (snakes missing on back); connecting part between the capitals has the shape of two joined planks (T-form); the top one showing a row of stylized goat heads with quatrefoil motif close to the center (back of this part is undecorated); vertical part shaped like partial screen, consisting of intertwined bands ending in horse heads (omitted on back), with the remaining space in the corners filled with chevrons; foot-like extensions of the intertwined bands are superimposed in relief on the horizontal bar that frames the lower end of the whole section, and is decorated with a herringbone pattern. Right outer strut is missing.