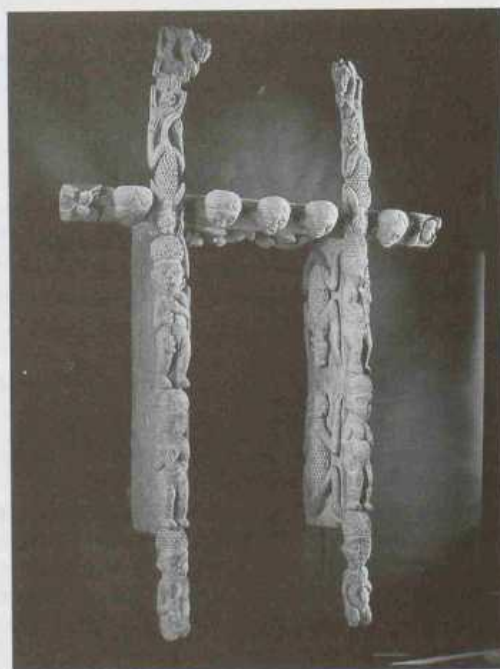




*Fig. 14:* Male figure, Bangou. Cameroon, 19th century. Wood; height 90.5 cm. Ethnologisches Museum Berlin, inv. no. III C 21058



*Fig. 15:* Door frame, Baham. Cameroon, 19th century. Wood; height 267 cm. Ethnologisches Museum Berlin, inv. no. III C 21052a-c

le on punitive expeditions (Glauning 1895, 1905b). On this point, Glauning was in full agreement with the museum ethnologists, because apart from the possibility of “conveniently” gathering new research material by these means, such “trophy” were also particularly suitable examples for expressly conveying to museum visitors the military superiority of German soldiers and the “success” of German colonial rule