

which mark the eyes. Other times the mouth section is marked merely by a slight elevation (fig. 4 *B, D*). The surface may also be entirely smooth except for two small, point-like impressions which mark the animals nostrils (fig. 4 *C, E*). If we look more closely at the fragment, fig. 4 *C*, we find that the section behind the eyes and the head are furnished with the same sort of point-

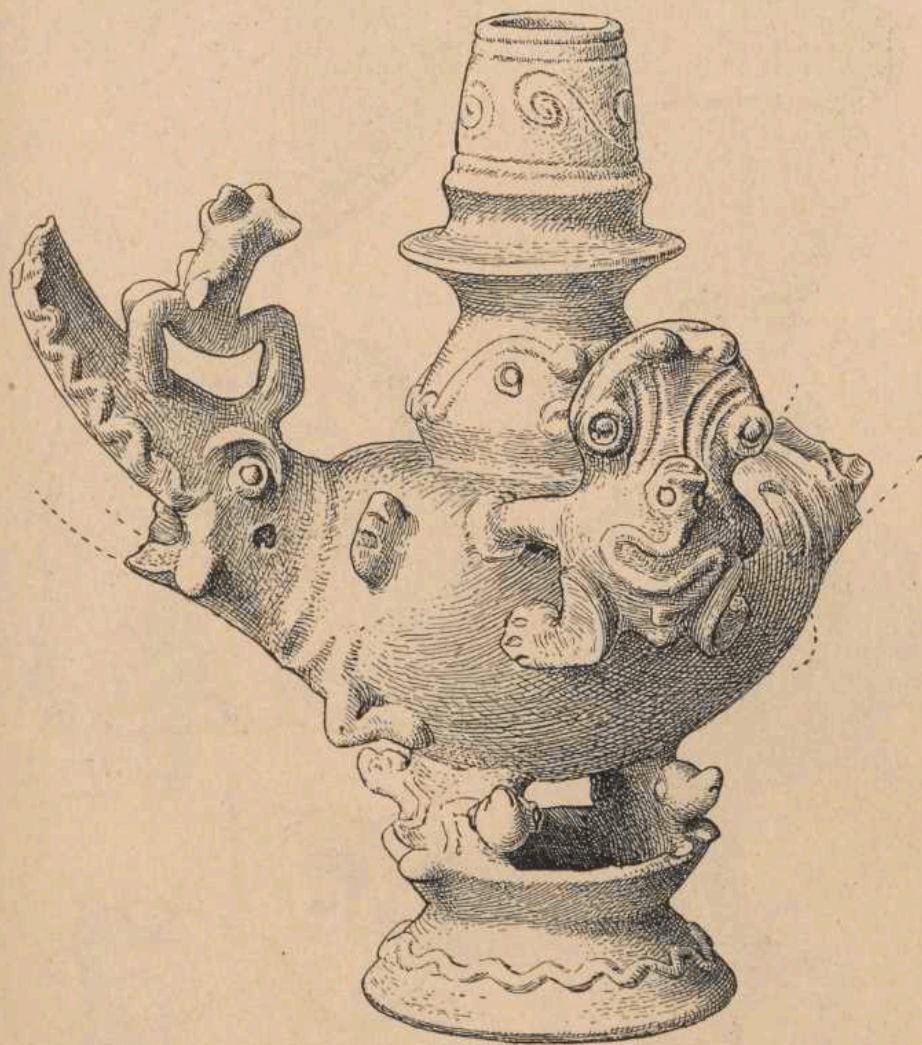


Fig. 3. Vessel of clay, Santarem. Notice the frog which on its back has a peculiar decoration consisting of a snake. G. M. 24.16.43. $\frac{2}{3}$.

like impressions as the two which serve for nostrils. Possibly the marking of the later has given rise to the idea of continued decoration of the animal figure in the same style. Fig. 4 *F* with a smooth mouth section has evidently when complete been a whistle. On the lower side of the head runs, as shown in the cross-section drawing, a channel which may have continued into a hollow body. According to what my friend, K. G. IZIKOWITZ, kindly has informed