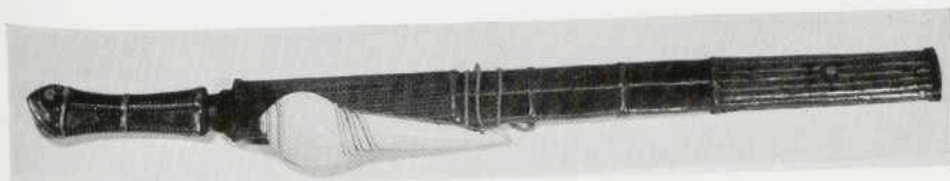




a) Mo-so (¹Na-²khi) sword as depicted in text of ms. ²Ndzër-Issu ²t'u,
p. 9, rubric 9 (see also note 16, below and Plate 1, a, rubric 9).



b) Iron Mo-so (¹Na-²khi) helmet. (For description see Appendix.)



c) Sword with conch worn in girdle. (Photos by E. F. MARTEN.)